

CORTANI<sup>®</sup>  
INTERIORS



Frameless

SHOWER SCREENS

# Frameless

Frameless shower screens will add refined style to your bathroom, modernising the space, while remaining unobtrusive in your overall design. By selecting a frameless screen, you can maximise the amount of natural light to create a spacious look and feel throughout the room.

While frameless screens make for an excellent design choice, they are also highly functional too. With no frame around the perimeter of your glass, there are no nooks and crannies for build-up to occur, making cleaning quick and easy.



Cortani Interiors' extensive range of shower screens have been carefully curated to provide stylish, functional shower solutions for any bathroom design. Our expert consultants can provide you with support and guidance to select a shower screen that suits your style, and your budget.

Our range of Frameless shower screens are custom made right here in Australia and are installed by our expert technicians.



10 mm Toughened Glass<sup>^</sup>



Frameless Polished Edge



Inward & Outward Swinging Door



Self closing from 25°



Australian Designed and Manufactured



Custom Made to Measure



7-Year Replacement Parts Warranty\*



AS/NZS 2208 Compliant

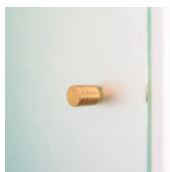
\*Includes 12 months labour when installed by Cortani Interiors.  
^6 mm on selected swinging bath panels.



Super strong inward and outward swinging door hinges will provide long term durability for your shower screen. Self closing from an angle of approximately 25 degrees for smooth and silent operation.



Minimally designed wall brackets add strength without compromising style. Wall brackets for fixed panels can also be swapped out for a full-length wall channel at no extra cost.



Acid etched glass is a great solution for family bathrooms, adding some additional privacy to your showering experience.

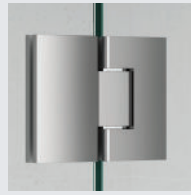


The inline door configuration has minimal lines for a streamlined and sleek look.

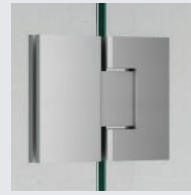
### Selection Tip

For correct pricing, select the size that applies to the widest side of your shower space. For example, if your shower space is 900 mm x 1200 mm wide, then the 1200 mm price will apply.

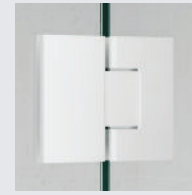
## Hinge Colours



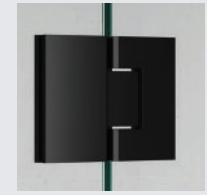
Chrome



Matt Silver



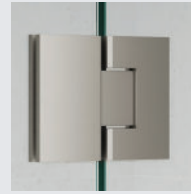
Matt White



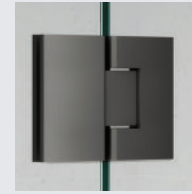
Matt Black



Brushed Gold



Brushed Nickel



Gunmetal Grey



MADE FROM SOLID BRASS

## Glass Options

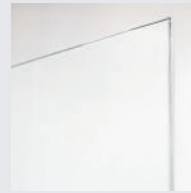
Optional top header panel also available at no extra cost.



Easy Clean Glass Nano Coating: \$88/m<sup>2</sup>.



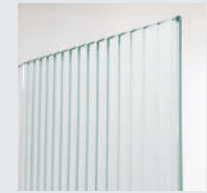
Clear (Standard)



Ultra Clear Low Iron (Optional upgrade, added cost)



Acid Etched (Optional upgrade, added cost)

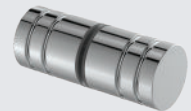


Narrow Reeded (Optional upgrade, added cost)

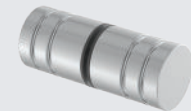
## Standard Knobs Included in price

Find more custom upgrade options on pages 20-23 (added cost).

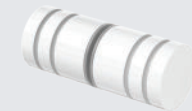
### Round Fingerpull 30 mm Ø 25 mm; Mounting Hole: 10 mm



Bright Silver PGFP30SB



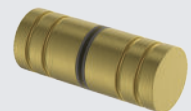
Matt Silver PGFP30MN



Matt White PGFP30PW



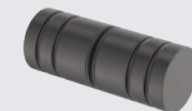
Matt Black PGFP30BK



Brushed Gold PGFP30MG

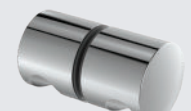


Brushed Nickel PGFP30BN

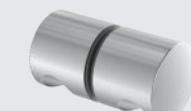


Gunmetal Grey PGFP30GG

### Full Round Knob with Finger Notch Ø 32 mm; Mounting Hole: 12 mm



Chrome ZUR-KRF



Pearl Satin ZUR-PEARL-KRF



Matt Black PN-KRF

### Round Knob with Recess

Ø 32 mm; Mounting Hole: 12 mm



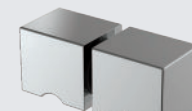
Chrome P-KRR



Matt Black (Aluminium) PN-KRR-AA

### Square Knob

28 x 28 mm; Mounting Hole: 12 mm



Chrome ZUR-KSF



Pearl Satin ZUR-PEARL-KSF

# Frameless Shower Screens

## 900 Frameless

### Single Door

- One frameless hinged door
- Door swings in and out
- Mounts between walls
- 2050 mm standard height
- 640 mm standard door width

Size (w) x (h) mm		
≤650 x 2050	900-65	\$1099
750 x 2050	900-75	\$1199



Swings In & Out



Frameless



Toughened Clear Glass



Chrome



Matt Silver



Matt White



Matt Black



Brushed Gold



Brushed Nickel



Gunmetal Grey



## 901 Frameless

### Single Door + Fixed Panel

- One frameless hinged door
- One frameless fixed hinge panel
- Door swings in and out
- Mounts between walls
- 2050 mm standard height
- 640 mm standard door width

Size (w) x (h) mm		
≤800 x 2050	901-80	\$1699
900 x 2050	901-90	\$1799
1000 x 2050	901-100	\$1899
1100 x 2050	901-110	\$1999
1200 x 2050	901-120	\$2099



Swings In & Out



Frameless



Toughened Clear Glass



Chrome



Matt Silver



Matt White



Matt Black



Brushed Gold



Brushed Nickel



Gunmetal Grey



## 901F Frameless

### Single Door + Fixed Panel

- One frameless hinged door
- One frameless fixed panel
- Door swings in and out
- Mounts between walls
- 2050 mm standard height
- 640 mm standard door width

Size (w) x (h) mm		
≤800 x 2050	901F-80	\$1699
900 x 2050	901F-90	\$1799
1000 x 2050	901F-100	\$1899
1100 x 2050	901F-110	\$1999
1200 x 2050	901F-120	\$2099



Swings In & Out



Frameless



Toughened Clear Glass



Chrome



Matt Silver



Matt White



Matt Black



Brushed Gold



Brushed Nickel



Gunmetal Grey



## 901I Frameless

Single Door + Two Fixed Panels

- One frameless hinged door
- One frameless fixed hinge panel
- One frameless fixed panel
- Door swings in and out
- 2050 mm standard height
- 640 mm standard door width

Size (w) x (h) mm

≤1200 x 2050	901I-120	\$2499
1300 x 2050	901I-130	\$2599
1400 x 2050	901I-140	\$2699



Swings In & Out



Frameless



Toughened Clear Glass



Chrome



Matt Silver



Matt White



Matt Black



Brushed Gold



Brushed Nickel



Gunmetal Grey



## 902 Frameless

Single Door with Return on Hob

- One frameless hinged door
- One frameless return panel on hob
- Door swings in and out
- 2050 mm standard height
- 640 mm standard door width

Size (w) x (h) mm

≤650 x 2050	902-65	\$1999
750 x 2050	902-75	\$2099



Swings In & Out



Frameless



Toughened Clear Glass



Chrome



Matt Silver



Matt White



Matt Black



Brushed Gold



Brushed Nickel



Gunmetal Grey



## 902R Frameless

Single Door + Fixed Panel with Return on Hob

- One frameless hinged door
- One frameless fixed hinge panel
- One frameless return panel on hob
- Door swings in and out
- 2050 mm standard height
- 640 mm standard door width

Size (w) x (h) mm

≤800 x 2050	902R-80	\$2499
900 x 2050	902R-90	\$2599
1000 x 2050	902R-100	\$2699
1100 x 2050	902R-110	\$2799
1200 x 2050	902R-120	\$2899



Swings In & Out



Frameless



Toughened Clear Glass



Chrome



Matt Silver



Matt White



Matt Black



Brushed Gold



Brushed Nickel



Gunmetal Grey



# Frameless Shower Screens

## 902F Frameless

Single Door + Fixed Panel  
with Return on Hob

- One frameless hinged door
- One frameless fixed panel
- One frameless return panel on hob
- Door swings in and out
- 2050 mm standard height
- 640 mm standard door width



Size (w) x (h) mm		
≤800 x 2050	902F-80	\$2499
900 x 2050	902F-90	\$2599
1000 x 2050	902F-100	\$2699
1100 x 2050	902F-110	\$2799
1200 x 2050	902F-120	\$2899



## 902I Frameless

Single Door + Two Fixed Panels  
with Return on Hob

- One frameless hinged door
- One frameless fixed panel
- One frameless fixed hinge panel
- One frameless return panel on hob
- Door swings in and out
- 2050 mm standard height
- 640 mm standard door width



Size (w) x (h) mm		
≤1200 x 2050	902I-120	\$3399
1300 x 2050	902I-130	\$3499
1400 x 2050	902I-140	\$3599



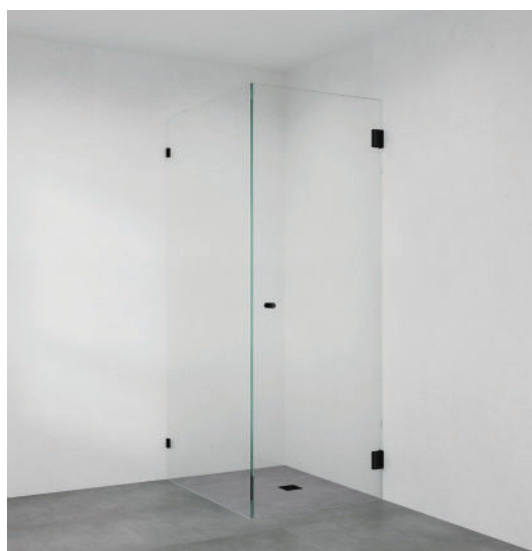
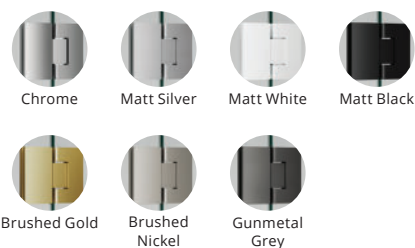
## 903 Frameless

Single Door with Return

- One frameless hinged door
- One frameless return panel
- Door swings in and out
- 2050 mm standard height
- 640 mm standard door width



Size (w) x (h) mm		
≤650 x 2050	903-65	\$2099
750 x 2050	903-75	\$2199



## 903R Frameless

Single Door

+ Fixed Panel with Return

- One frameless hinged door
- One frameless fixed hinge panel
- One frameless return panel
- Door swings in and out
- 2050 mm standard height
- 640 mm standard door width



Swings In & Out



Frameless



Toughened Clear Glass

Size (w) x (h) mm

≤800 x 2050	903R-80	\$2699
900 x 2050	903R-90	\$2799
1000 x 2050	903R-100	\$2899
1100 x 2050	903R-110	\$2999
1200 x 2050	903R-120	\$3099



Chrome



Matt Silver



Matt White



Matt Black



Brushed Gold



Brushed Nickel



Gunmetal Grey



## 903F Frameless

Single Door

+ Fixed Panel with Return

- One frameless hinged door
- One frameless fixed panel
- One frameless return panel
- Door swings in and out
- 2050 mm standard height
- 640 mm standard door width



Swings In & Out



Frameless



Toughened Clear Glass

Size (w) x (h) mm

≤800 x 2050	903F-80	\$2699
900 x 2050	903F-90	\$2799
1000 x 2050	903F-100	\$2899
1100 x 2050	903F-110	\$2999
1200 x 2050	903F-120	\$3099



Chrome



Matt Silver



Matt White



Matt Black



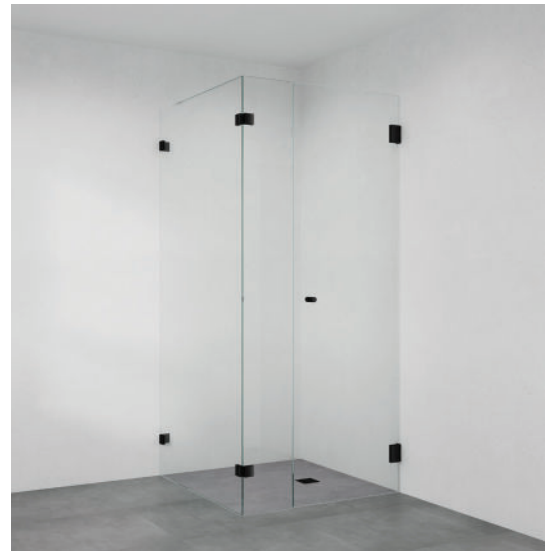
Brushed Gold



Brushed Nickel



Gunmetal Grey



## 903I Frameless

Single Door

+ Two Fixed Panels with Return

- One frameless hinged door
- One frameless fixed panel
- One frameless fixed hinge panel
- One frameless return panel
- Door swings in and out
- 2050 mm standard height
- 640 mm standard door width



Swings In & Out



Frameless



Toughened Clear Glass

Size (w) x (h) mm

≤1200 x 2050	903I-120	\$3499
1300 x 2050	903I-130	\$3599
1400 x 2050	903I-140	\$3699



Chrome



Matt Silver



Matt White



Matt Black



Brushed Gold



Brushed Nickel



Gunmetal Grey



# Frameless Shower Screens

## 904B Frameless

Single Door  
with Splayed Return on Hob

- One frameless hinged door
- One frameless splayed return panel on hob
- Door swings in and out
- 2050 mm standard height
- 640 mm standard door width
- Pricing based on 1000 mm wide return panel



Swings In & Out



Frameless



Toughened Clear Glass

Size (w) x (h) mm		
≤650 x 2050	904B-65	\$1999
750 x 2050	904B-75	\$2099



Chrome



Matt Silver



Matt White



Matt Black



Brushed Gold



Brushed Nickel



Gunmetal Grey



## 904A Frameless

Single Door  
with Splayed Return

- One frameless hinged door
- One frameless splayed return panel
- Door swings in and out
- 2050 mm standard height
- 640 mm standard door width
- Pricing based on 1000 mm wide return panel



Swings In & Out



Frameless



Toughened Clear Glass

Size (w) x (h) mm		
≤650 x 2050	904A-65	\$2099
750 x 2050	904A-75	\$2199



Chrome



Matt Silver



Matt White



Matt Black



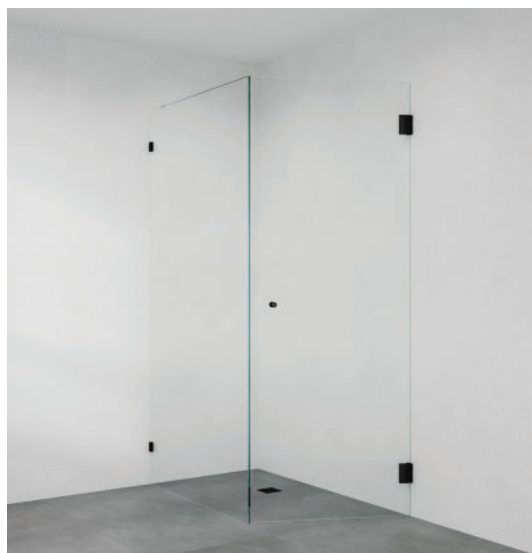
Brushed Gold



Brushed Nickel



Gunmetal Grey



## 904 Frameless

Single Door  
with Two Splayed Returns

- One frameless hinged door
- One frameless 500 mm wide splayed hinge panel
- One frameless 500 mm wide splayed fixed panel
- Door swings in and out
- 2050 mm standard height
- 640 mm standard door width



Swings In & Out



Frameless



Toughened Clear Glass

Size (w) x (h) mm		
≤650 x 2050	904-65	\$2999
750 x 2050	904-75	\$3099



Chrome



Matt Silver



Matt White



Matt Black



Brushed Gold



Brushed Nickel



Gunmetal Grey





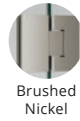
## 904I Frameless

Single Door + Two Fixed Panels  
with Two Splayed Returns

- One frameless hinged door
- One frameless hinge panel
- One frameless fixed panel
- Two frameless splayed 500 mm fixed panels
- Door swings in and out
- 2050 mm standard height
- 640 mm standard door width

Size (w) x (h) mm

≤1200 x 2050	904I-120	\$4499
1300 x 2050	904I-130	\$4599
1400 x 2050	904I-140	\$4699



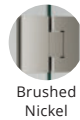
## 904P Frameless

Side Entry Door with  
Two Splayed Returns

- One frameless hinged door
- One frameless 500 mm wide splayed panel
- One frameless 700 mm wide return panel
- Door swings in and out
- 2050 mm standard height
- 640 mm standard door width

Size (w) x (h) mm

≤650 x 2050	904P-65	\$3299
750 x 2050	904P-75	\$3399



# Frameless Shower Screens

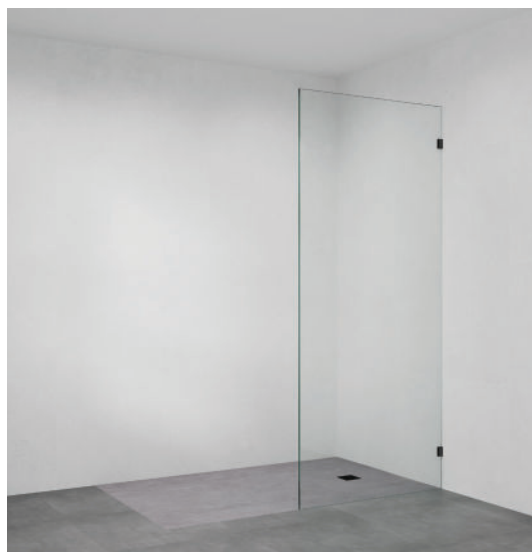
## 915B Frameless

### Square Shower Panel

- One frameless fixed panel with wall brackets
- 2050 mm high



Size (w) x (h) mm		
200 x 2050	915B-20	\$699
≤700 x 2050	915B-70	\$899
800 x 2050	915B-80	\$999
850 x 2050	915B-85	\$999
900 x 2050	915B-90	\$999
950 x 2050	915B-95	\$999
1000 x 2050	915B-100	\$999
1050 x 2050	915B-105	\$1099
1100 x 2050	915B-110	\$1099
1150 x 2050	915B-115	\$1199
1200 x 2050	915B-120	\$1199
1300 x 2050	915B-130	\$1299
1400 x 2050	915B-140	\$1299



## 918B Frameless

### Rounded shower panel

- One frameless fixed panel with wall brackets
- Rounded corner • 2050 mm high



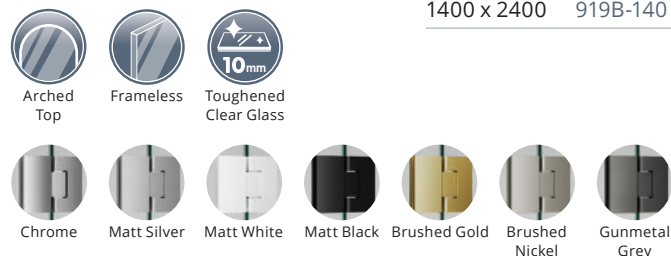
Size (w) x (h) mm		
≤700 x 2050	918B-70	\$899
800 x 2050	918B-80	\$999
850 x 2050	918B-85	\$999
900 x 2050	918B-90	\$999
950 x 2050	918B-95	\$999
1000 x 2050	918B-100	\$999
1050 x 2050	918B-105	\$1099
1100 x 2050	918B-110	\$1099
1150 x 2050	918B-115	\$1199
1200 x 2050	918B-120	\$1199
1300 x 2050	918B-130	\$1299
1400 x 2050	918B-140	\$1299



## 919B Frameless

### Arch Shower Panel

- One frameless fixed panel with wall brackets
- Arched top
- 2200 mm high x up to 1200 mm wide (2400 mm high x 1300+ mm wide also available)



Size (w) x (h) mm		
≤700 x 2200	919B-70	\$949
800 x 2200	919B-80	\$1049
900 x 2200	919B-90	\$1049
1000 x 2200	919B-100	\$1049
1100 x 2200	919B-110	\$1149
1200 x 2200	919B-120	\$1249
1300 x 2400	919B-130	\$1399
1400 x 2400	919B-140	\$1399



## 915C Frameless

### Square Shower Panel

- One frameless fixed panel with wall channel
- 2050 mm high



Size (w) x (h) mm		
200 x 2050	915C-20	\$699
≤700 x 2050	915C-70	\$899
800 x 2050	915C-80	\$999
850 x 2050	915C-85	\$999
900 x 2050	915C-90	\$999
950 x 2050	915C-95	\$999
1000 x 2050	915C-100	\$999
1050 x 2050	915C-105	\$1099
1100 x 2050	915C-110	\$1099
1150 x 2050	915C-115	\$1199
1200 x 2050	915C-120	\$1199
1300 x 2050	915C-130	\$1299
1400 x 2050	915C-140	\$1299



## 918C Frameless

### Rounded Shower Panel

- One frameless fixed panel with wall channel
- Rounded corner
- 2050 mm high



Size (w) x (h) mm		
≤700 x 2050	918C-70	\$899
800 x 2050	918C-80	\$999
850 x 2050	918C-85	\$999
900 x 2050	918C-90	\$999
950 x 2050	918C-95	\$999
1000 x 2050	918C-100	\$999
1050 x 2050	918C-105	\$1099
1100 x 2050	918C-110	\$1099
1150 x 2050	918C-115	\$1199
1200 x 2050	918C-120	\$1199
1300 x 2050	918C-130	\$1299
1400 x 2050	918C-140	\$1299



## 919C Frameless

### Arch Shower Panel

- One frameless fixed panel with wall channel
- Arched top
- 2200 mm high x up to 1200 mm wide (2400 mm high x 1300+ mm wide also available)



Size (w) x (h) mm		
≤700 x 2200	919C-70	\$949
800 x 2200	919C-80	\$1049
900 x 2200	919C-90	\$1049
1000 x 2200	919C-100	\$1049
1100 x 2200	919C-110	\$1149
1200 x 2200	919C-120	\$1249
1300 x 2400	919C-130	\$1399
1400 x 2400	919C-140	\$1399



# Frameless bath panels

## 912 Frameless

### Square Bath Panel

- One frameless fixed bath panel with wall brackets
- Mounts on bath
- 1500 mm high

Size (w) x (h) mm		
≤700 x 1500	B10-700	\$699
750 x 1500	P-BS-0750	\$729
900 x 1500	B10-900	\$799



Square Corner



Frameless



Toughened Clear Glass



Bright Silver



## 912A Frameless

### Rounded Bath Panel

- One frameless fixed bath panel with wall brackets
- Rounded corner
- Mounts on bath
- 1500 mm high

Size (w) x (h) mm		
≤700 x 1500	912A-70	\$799
800 x 1500	912A-80	\$849



Rounded Corner



Frameless



Toughened Clear Glass



Chrome



Matt Silver



Matt White



Matt Black



Brushed Gold



Brushed Nickel



Gunmetal Grey



## 912B Frameless

### Arch Bath Panel

- One frameless fixed bath panel with wall brackets
- Arched top
- Mounts on bath
- 1650 mm high

Size (w) x (h) mm		
≤800 x 1650	AB10-800	\$999



Arched Top



Frameless



Toughened Clear Glass



Bright Silver



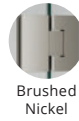
## 917 Frameless

### Swinging + Fixed Bath Panel

- One frameless swinging bath panel
- One frameless fixed hinge panel with brace
- Swings in and out
- Mounts on bath
- 1500 mm high
- 10 mm clear toughened glass

Size (w) x (h) mm

≤900 x 1500	917-90	\$1699
1000 x 1500	917-100	\$1799



## 917A Frameless

### Swinging + Fixed Bath Panel

- One frameless swinging bath panel
- One frameless fixed panel with brace
- Swings in and out
- Mounts on bath
- 1500 mm high
- 6 mm clear toughened glass

Size (w) x (h) mm

≤900 x 1500	917A-90	\$1199
1000 x 1500	917A-100	\$1299



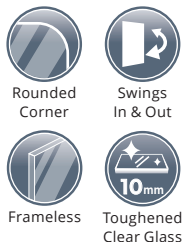
# Frameless bath panels

## 946 Frameless

### Swinging Rounded Bath Panel

- One frameless swinging bath panel
- Rounded corner
- Mounts over bath
- 1500 mm high

Size (w) x (h) mm		
≤700 x 1500	946-70	\$899
800 x 1500	946-80	\$949



## 947 Frameless

### Dual Swing Bath Panels

- Two frameless swinging bath panels
- Swings in and out
- Mounts over bath
- 1500 mm high
- 1000 mm wide (500 + 500 mm)
- 10 mm clear toughened glass

Size (w) x (h) mm		
≤1000 x 1500	947-100	\$1699



## 947A Frameless

### Dual Swing Bath Panels

- Two frameless swinging bath panels
- Swings in and out
- Mounts over bath
- 1500 mm high
- 1000 mm wide (500 + 500 mm)
- 6 mm clear toughened glass

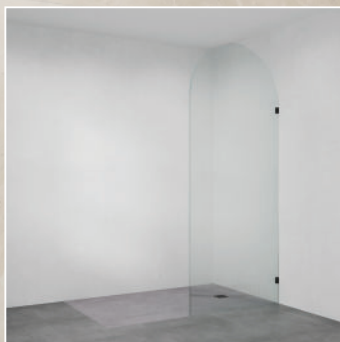
Size (w) x (h) mm		
≤1000 x 1500	947A-100	\$1299



## Frameless Reeded glass shower screens

All frameless shower screens can be ordered with 10 mm narrow reeded glass as a custom upgrade. Reeded glass provides extra privacy for your showering experience making it an excellent solution for family bathrooms. The vertical fluting adds another dimension to your bathroom design with its unique colour and effect on light.

Reeded glass is easy to clean with a flat surface on the inside. Fluting on the outside always runs vertically so dust can't collect on the surface. It is also great for concealing any marks on the screen in between cleaning.



Contact us for a custom quote.

# Frameless Sliding Shower Screens

Beautifully designed, our range of frameless sliding shower screens will provide you with a standout piece for your bathroom. High quality, durable fittings and smooth sliding operation ensures optimum functionality. Configurations are versatile, suiting both inline or corner applications, and are especially suited for wide openings.







10 mm Toughened Glass



Frameless Polished Edge



Smooth Sliding Doors



Australian Designed and Manufactured



Custom Made to Measure

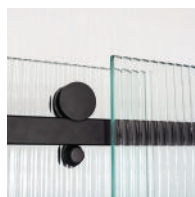
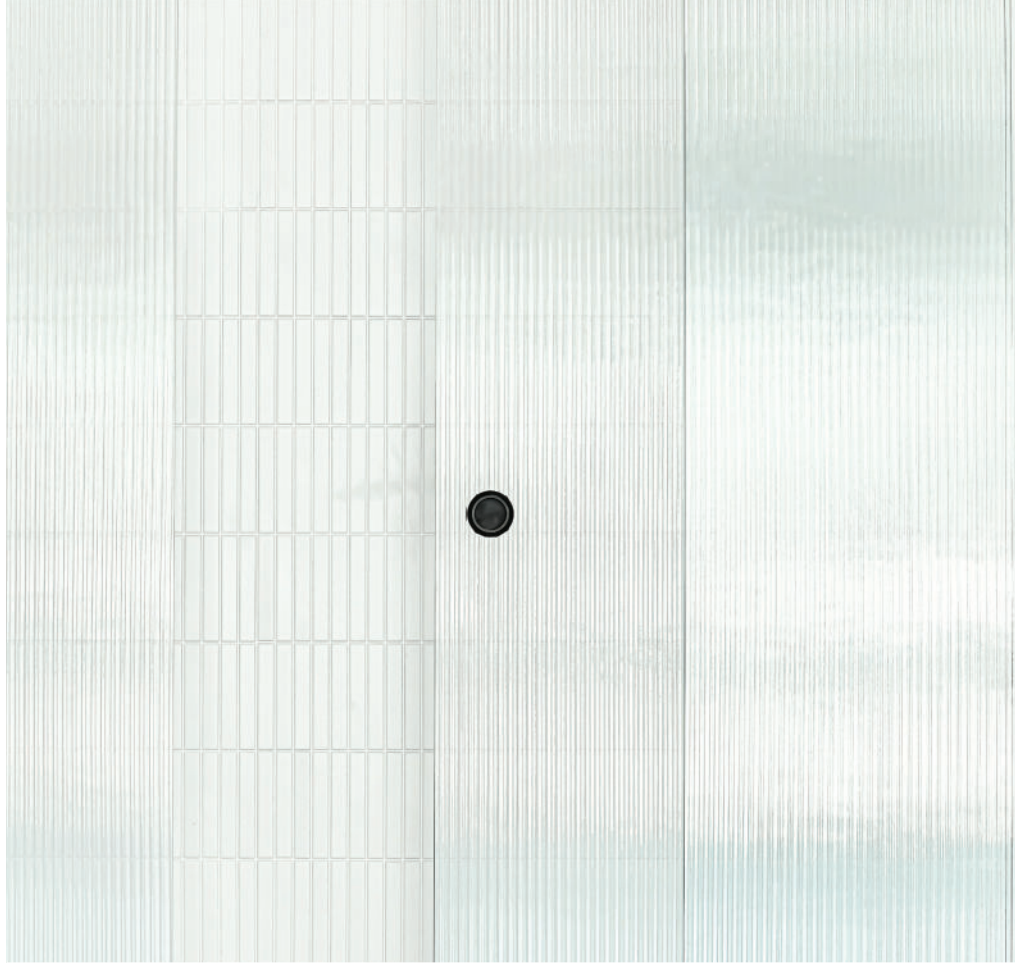


7-Year Replacement Parts Warranty\*



AS/NZS 2208 Compliant

\*Includes 12 months labour when installed by Cortani Interiors.



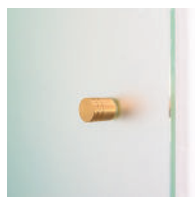
High quality, durable fittings ensure smooth sliding operation and years of satisfaction.



The optimum choice for our sliding shower screens, the flush fingerpull ring features a wide opening for ease of use and has been carefully designed to match the fittings along the top slider rail.



Minimally designed wall brackets add strength without compromising style. Wall brackets for fixed panels can also be swapped out for a full-length wall channel at no extra cost.



Acid etched glass is a great solution for family bathrooms adding some additional privacy to your showering experience.

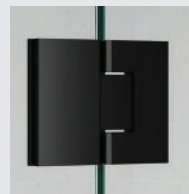
### Selection Tip

For correct pricing, select the size that applies to the widest side of your shower space. For example, if your shower space is 900 mm x 1200 mm wide, then the 1200 mm price will apply.

## COLOURS



Bright Silver



Matt Black



Brushed Gold\*  
(Added Cost)

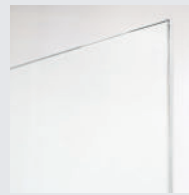


Brushed Nickel\*  
(Added Cost)

## GLASS OPTIONS



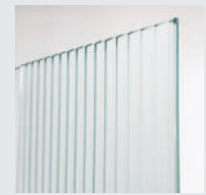
Clear  
(Standard)



Ultra Clear Low Iron  
(Optional Upgrade,  
Added Cost)



Acid Etched  
(Optional Upgrade,  
Added Cost)



Narrow Reeded  
(Optional Upgrade;  
Added Cost)\*

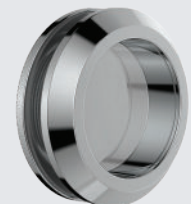


Easy Clean Glass  
Nano Coating: \$88/m<sup>2</sup>.

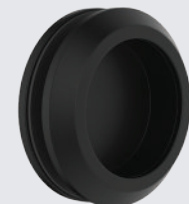
## Standard Knob Included in price

Find more custom upgrade options on pages 20–23 (added cost).

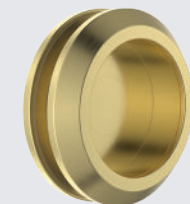
Flush Fingerpull Ring Ø 58 mm; Inner Ø 40 mm; Mounting Hole: 48 mm



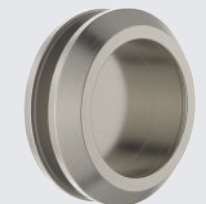
Bright Silver  
PGFPSH10SB



Matt Black  
PGFPSH10BK



Brushed Gold  
PGFPSH10BG



Brushed Nickel  
PGFPSH10BN

# Frameless Sliding Screens

## 991 Frameless

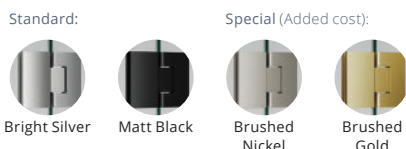
### Sliding Door + Fixed Panel

- One frameless sliding door
- One frameless fixed panel
- Mounts between walls
- 2050 mm high
- 60 mm door panel overlap

Size (w) x (h) mm

≤1200 x 2050	991-120	\$2699
1300 x 2050	991-130	\$2849
1400 x 2050	991-140	\$2999
1500 x 2050	991-150	\$3149
1600 x 2050	991-160	\$3299

Pricing shown for standard colours only. Add \$200 for special colours.



## 991I Frameless

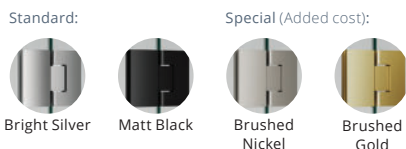
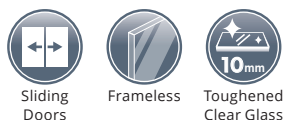
### Sliding Door + Two Fixed Panels

- One frameless sliding door
- Two frameless fixed panels
- Centre sliding door
- Mounts between walls
- 2050 mm high
- 60 mm door panel overlap

Size (w) x (h) mm

≤1700 x 2050	991I-170	\$3099
1800 x 2050	991I-180	\$3249
1900 x 2050	991I-190	\$3399
2000 x 2050	991I-200	\$3549
2100 x 2050	991I-210	\$3699
2200 x 2050	991I-220	\$3849
2300 x 2050	991I-230	\$3999
2400 x 2050	991I-240	\$4149

Pricing shown for standard colours only. Add \$200 for special colours.



## 992R Frameless

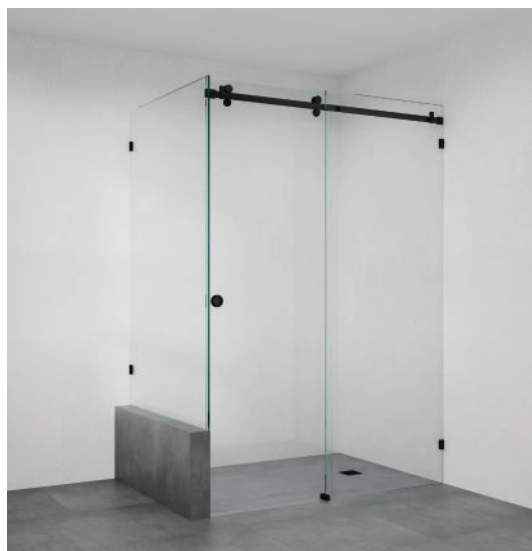
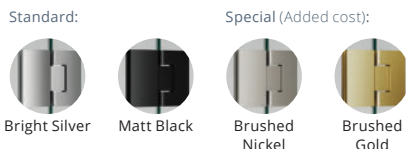
### Right Sliding Door + Fixed Panel with Return on Hob

- One frameless right sliding door
- One frameless fixed panel
- One frameless return panel on hob
- 2050 mm high
- 60 mm door panel overlap

Size (w) x (h) mm

≤1200 x 2050	992R-120	\$3299
1300 x 2050	992R-130	\$3449
1400 x 2050	992R-140	\$3599
1500 x 2050	992R-150	\$3749
1600 x 2050	992R-160	\$3899

Pricing shown for standard colours only. Add \$200 for special colours.



## 992F Frameless

Left Sliding Door + Fixed Panel with Return on Hob

- One frameless left sliding door
- One frameless fixed panel
- One frameless return panel on hob
- 2050 mm high
- 60 mm door panel overlap



Size (w) x (h) mm		
≤1200 x 2050	992F-120	\$3299
1300 x 2050	992F-130	\$3449
1400 x 2050	992F-140	\$3599
1500 x 2050	992F-150	\$3749
1600 x 2050	992F-160	\$3899



## 993R Frameless

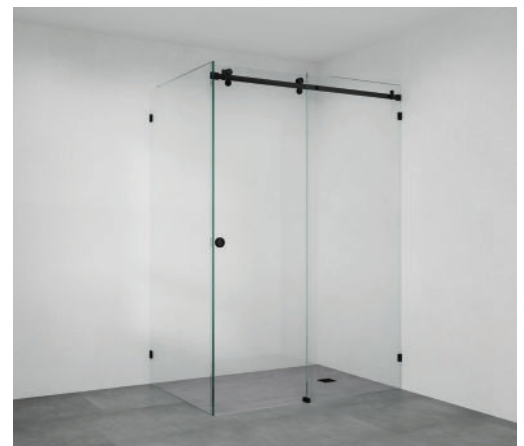
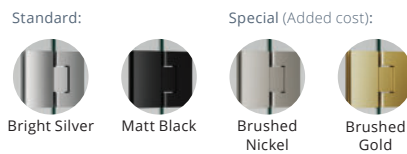
Right Sliding Door + Fixed Panel with Return

- One frameless right sliding door
- One frameless fixed panel
- One frameless return panel
- 2050 mm high
- 60 mm door panel overlap



Size (w) x (h) mm		
≤1200 x 2050	993R-120	\$3399
1300 x 2050	993R-130	\$3549
1400 x 2050	993R-140	\$3699
1500 x 2050	993R-150	\$3849
1600 x 2050	993R-160	\$3999

Pricing shown for standard colours only. Add \$200 for special colours.



## 993F Frameless

Left Sliding Door + Fixed Panel with Return

- One frameless left sliding door
- One frameless fixed panel
- One frameless return panel
- 2050 mm high
- 60 mm door panel overlap



Size (w) x (h) mm		
≤1200 x 2050	993F-120	\$3399
1300 x 2050	993F-130	\$3549
1400 x 2050	993F-140	\$3699
1500 x 2050	993F-150	\$3849
1600 x 2050	993F-160	\$3999



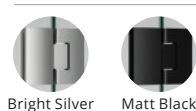
## 993I Frameless

Sliding Door + Two Fixed Panels with Return

- One frameless sliding door
- Two frameless fixed panels
- One frameless return panel
- 2050 mm high
- 60 mm door panel overlap



Size (w) x (h) mm		
≤1700 x 2050	993I-170	\$3699
1800 x 2050	993I-180	\$3849
1900 x 2050	993I-190	\$3999
2000 x 2050	993I-200	\$4149
2100 x 2050	993I-210	\$4299
2200 x 2050	993I-220	\$4449
2300 x 2050	993I-230	\$4599
2400 x 2050	993I-240	\$4749



# Knobs & Handles

## Custom Upgrade Knobs & Handles

Additional cost

Round Fingerpull 43 mm Ø 25 mm; Mounting Hole: 10 mm



Bright Silver  
\$55 • PGFP43RSB



Satin Chrome  
\$55 • PGFP43RSC



Matt Black  
\$55 • PGFP43RBK



Polished Gold  
\$55 • DK6-GP



Polished Rose Gold  
\$55 • DK6-RG



Polished Nickel  
\$55 • DK6-PN



Satin Nickel  
\$55 • DK6-SN



Brushed Brass  
\$55 • DK6-BB



Brushed Brass Laquer  
\$55 • DK6-BBE



Brushed Gold  
\$55 • PGFP43RBG



Brushed Nickel  
\$55 • PGFP43RBN



Gunmetal Grey  
\$55 • PGFP43RGM

Round Knob with Lip Ø 35 mm; Mounting Hole: 10 mm



Chrome  
\$55 • EK5-PC



Matt Black  
\$55 • EK5-MB



Polished Gold  
\$55 • EK5-GP



Polished Rose Gold  
\$55 • EK5-RG



Brushed Brass  
\$55 • EK5-BB



Brushed Brass Laquer  
\$55 • EK5-BBE



Brushed Rose Gold  
\$55 • EK5-BRG



Satin Nickel  
\$55 • EK5-SN



Satin Gunmetal  
\$55 • EK5-SGM

Round Knob with Shallow Recess Ø 30 mm; Mounting Hole: 10 mm



Chrome  
\$55 • EK2-PC



Matt Black  
\$55 • EK2-MB



Polished Gold  
\$55 • EK2-GP



Brushed Brass Laquer  
\$55 • EK2-BBE



Satin Nickel  
\$55 • EK2-SN

Round Knob with Ridges Ø 30 mm, Mounting Hole: 10 mm



Chrome  
\$55 • EK4-PC



Matt Black  
\$55 • EK4-MB



Polished Gold  
\$55 • EK4-GP



Polished Rose Gold  
\$55 • EK4-RG



Brushed Brass Laquer  
\$55 • EK4-BBE



Satin Nickel  
\$55 • EK4-SN

## Custom Upgrade Knobs & Handles

Additional cost

Round Knob with Recess  $\varnothing$  25 mm; Mounting Hole: 10 mm



Chrome  
\$55 • EK8-PC



Matt Black  
\$55 • EK8-MB



Polished Gold  
\$55 • EK8-GP



Brushed Brass Laquer  
\$55 • EK8-BBE



Satin Nickel  
\$55 • EK8-SN



Matt Black (Brass)  
 $\varnothing$  32 mm; 12 mm mounting hole  
\$55 • PN-KRR

Flush Fingerpull Ring  $\varnothing$  58 mm; Inner  $\varnothing$  40 mm; Mounting Hole: 48 mm



Bright Silver  
\$66 • PGFPSH10SB



Matt Black  
\$66 • PGFPSH10BK



Brushed Gold  
\$66 • PGFPSH10BG



Brushed Nickel  
\$66 • PGFPSH10BN

Round Pull Handle 210 mm long; Mounting Hole: 2 x 12 mm



Chrome  
\$99 • DPH-210-PC



Matt Black  
\$132 • DPH-210-MB



Brushed Brass Laquer  
\$132 • DPH-210-BBE



Satin Nickel  
\$99 • DPH-210-SN

Round Pull Handle 310 mm long; Mounting Hole: 2 x 12 mm



Chrome  
\$110 • DPH-310-PC



Matt Black  
\$154 • DPH-310-MB



Brushed Brass Laquer  
\$154 • DPH-310-BBE



Satin Nickel  
\$110 • DPH-310-SN

Square Pull Handle

210 mm / 250 mm long; Mounting Hole: 2 x 10 mm



Polished Chrome  
210 mm  
\$88 • PGP21S



Polished Chrome  
250 mm  
\$99 • PGP25S

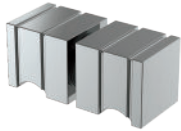


# Knobs & Handles

## Custom Upgrade Knobs & Handles

Additional cost

Square Knob with Lines 30 x 30 mm; Mounting Hole: 10 mm



Chrome  
\$77 • FEK-PC



Matt Chrome  
\$77 • FEK-MC



Satin Chrome  
\$77 • FEK-SC



Matt Black  
\$77 • FEK-MB



Polished Gold  
\$77 • FEK-GP



Polished Rose Gold  
\$77 • FEK-RG



Polished Nickel  
\$77 • FEK-PN



Brushed Brass  
\$77 • FEK-BB



Brushed Brass Laquer  
\$77 • FEK-BBE



Brushed Rose Gold  
\$77 • FEK-BRG



Satin Nickel  
\$77 • FEK-SN



Satin Gunmetal  
\$77 • FEK-SGM

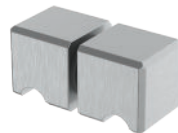
Square Knob 30 x 30 mm; Mounting Hole: 12 mm



Bright Silver  
\$44 • PGFPMSSB



Chrome  
\$33 • ZUR-KSF



Satin Chrome  
\$44 • PGFPMSSC



Matt Black  
\$44 • PGFPMGBK

Flat Square Knob 70 x 50 mm; Mounting Hole: 2 x 10 mm



Chrome  
\$99 • FEK-50-PC



Matt Chrome  
\$121 • FEK-50-MC



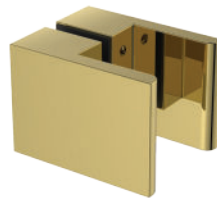
Satin Chrome  
\$121 • FEK-50-SC



Matt Black  
\$121 • FEK-50-MB



Polished Gold  
\$121 • FEK-50-GP



Polished Brass  
\$99 • FEK-50-PB



Polished Nickel  
\$121 • FEK-50-PN



Polished Rose Gold  
\$121 • FEK-50-RG



Brushed Brass  
\$99 • FEK-50-BB



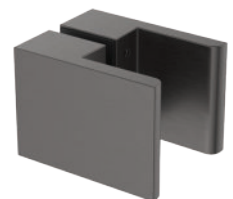
Brushed Brass Laquer  
\$121 • FEK-50-BBE



Brushed Rose Gold  
\$121 • FEK-50-BRG



Satin Nickel  
\$99 • FEK-50-SN



Satin Gunmetal  
\$121 • FEK-50-SGM

## Custom Upgrade Knobs & Handles

Additional cost

### Flat Square Pull Handle

180 mm long; Mounting Hole: 2 x 12 mm



Chrome  
\$99  
FEH-180-PC



Matt Black  
\$132  
FEH-180-MB



Polished Gold  
\$132  
FEH-180-GP



Brushed Brass  
\$99  
FEH-180-BB



Brushed Brass Lacquer  
\$121  
FEH-180-BBE



Satin Nickel  
\$99  
FEH-180-SN



Satin Gunmetal  
\$176  
FEH-180-SGM

### Flat Rectangular Knob 70 x 100 mm; Mounting Hole: 2 x 10 mm



Chrome  
\$187 • FEK-100-PC



Matt Chrome  
\$209 • FEK-100-MC



Satin Chrome  
\$209 • FEK-100-SC



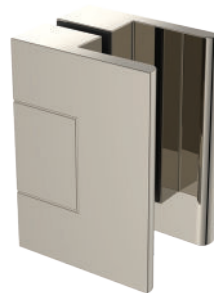
Matt Black  
\$187 • FEK-100-MB



Polished Gold  
\$187 • FEK-100-GP



Polished Rose Gold  
\$209 • FEK-100-RG



Polished Nickel  
\$209 • FEK-100-PN



Brushed Brass  
\$187 • FEK-100-BB



Brushed Brass Laquer  
\$187 • FEK-100-BBE



Brushed Rose Gold  
\$209 • FEK-100-BRG



Satin Nickel  
\$187 • FEK-100-SN



Satin Gunmetal  
\$209 • FEK-100-SGM



# CORTANI<sup>®</sup>

INTERIORS

*inspiring*  
spaces

Cortani Interiors, formerly known as Showerama, has over 50 years of experience in manufacturing and installing high quality shower screens, wardrobes, mirrors and splashbacks. Our extensive range of options allows us to provide you with a solution that suits your style and your budget.

Our highly skilled technicians can provide custom installation for most products within our range. We service South-East Queensland and Northern NSW, from Bundaberg to Coffs Harbour.

To learn more about our range, visit our website or contact us below.

#### Visit our showroom

600 Old Gympie Road, Narangba QLD 4504  
Monday - Friday 8:00 am - 4:30 pm (excludes public holidays)

#### Contact Us

☎ 1800 826 489  
✉ [info@cortani.com.au](mailto:info@cortani.com.au)  
🏠 [cortani.com.au](http://cortani.com.au)

RE-ORDER CODE: CAT-FRAMELESS