

Pivot Block Sets

PIVOT-SET

Available for left or right installation.

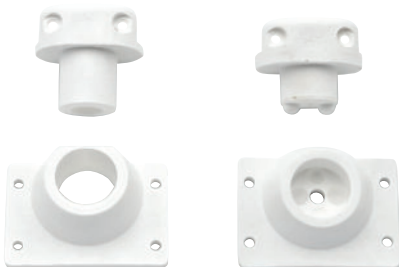
White **PIVOT-SET**

Grey **PIVOT-SET-G**

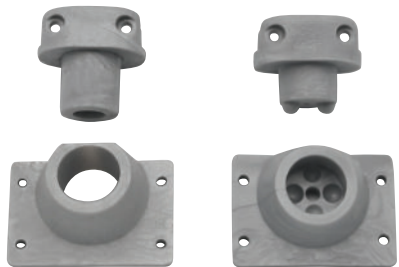
Black **PIVOT-SET-B**

Top

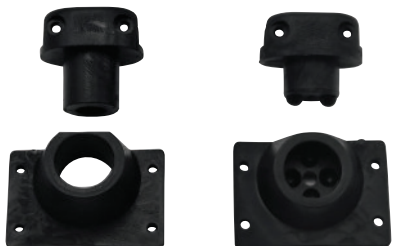
Bottom



White



Grey



Black



CHECK GOODS THOROUGHLY BEFORE INSTALLATION

Installation of received goods that are damaged, warped or faulty will void warranty. Ensure all items meet your plumbing requirements.



PLEASE LEAVE THIS GUIDE WITH THE OWNER



Installation

1. Take pop rivet out of head track using a 1/8th drill bit.
2. Tap the door up and take door out.
3. Replace pivot blocks on bottom and top. To stop pivot block squeaking, rub Vaseline on the bottom of the pivot.
4. Replace (side) door back in and knock head track back down and pop rivet in.

NOTE: Check compatibility with Customer Service before ordering.

For warranty support, please contact Cortani

600 Old Gympie Road, Narangba QLD 4504

P 1800 826 489 E info@cortani.com.au

CORTANI
INTERIORS